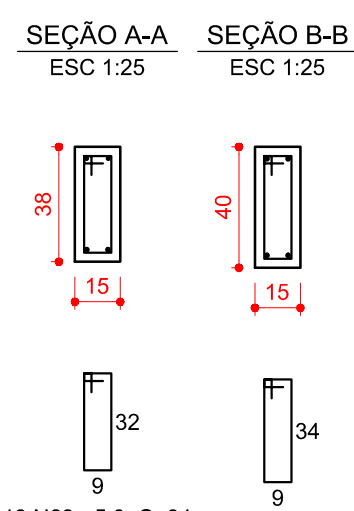
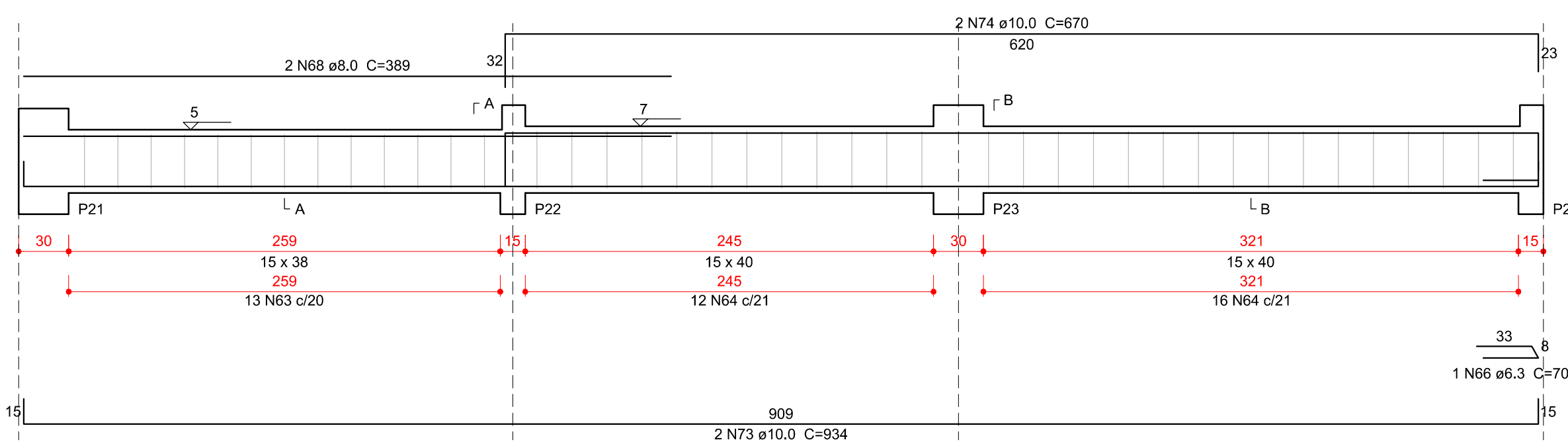
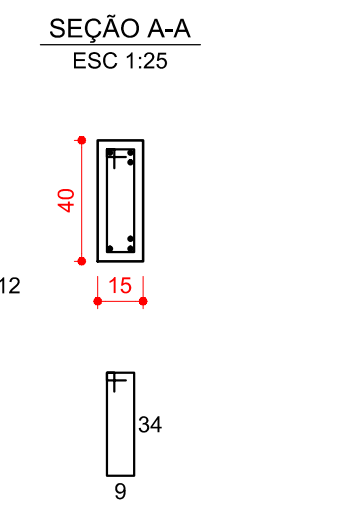
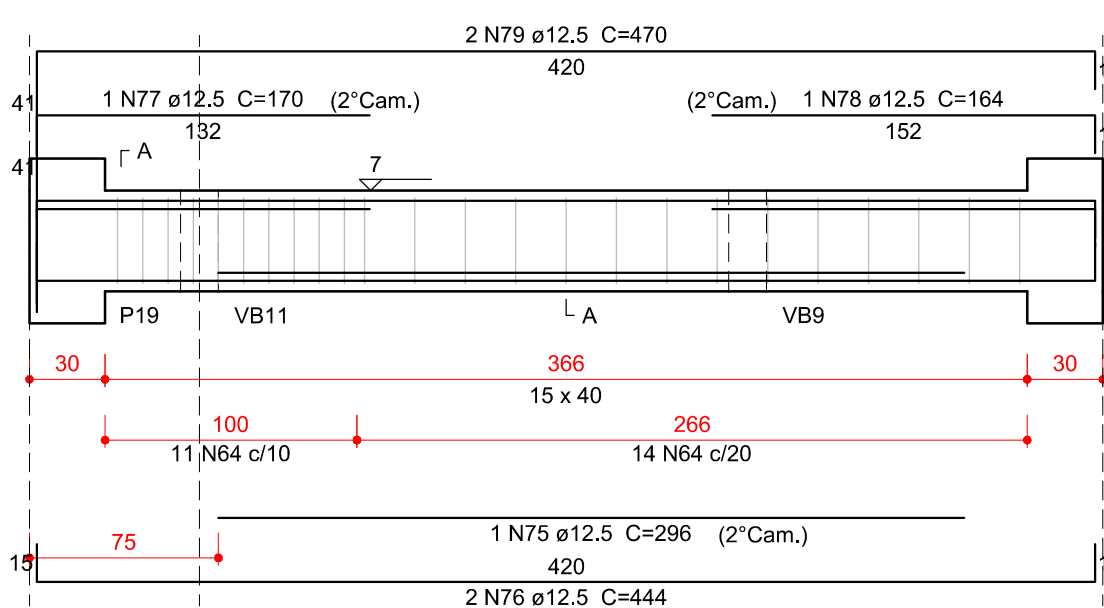


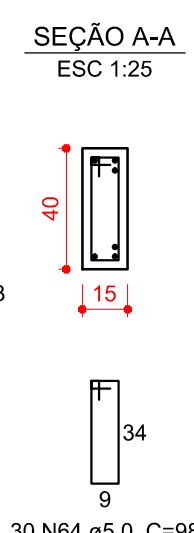
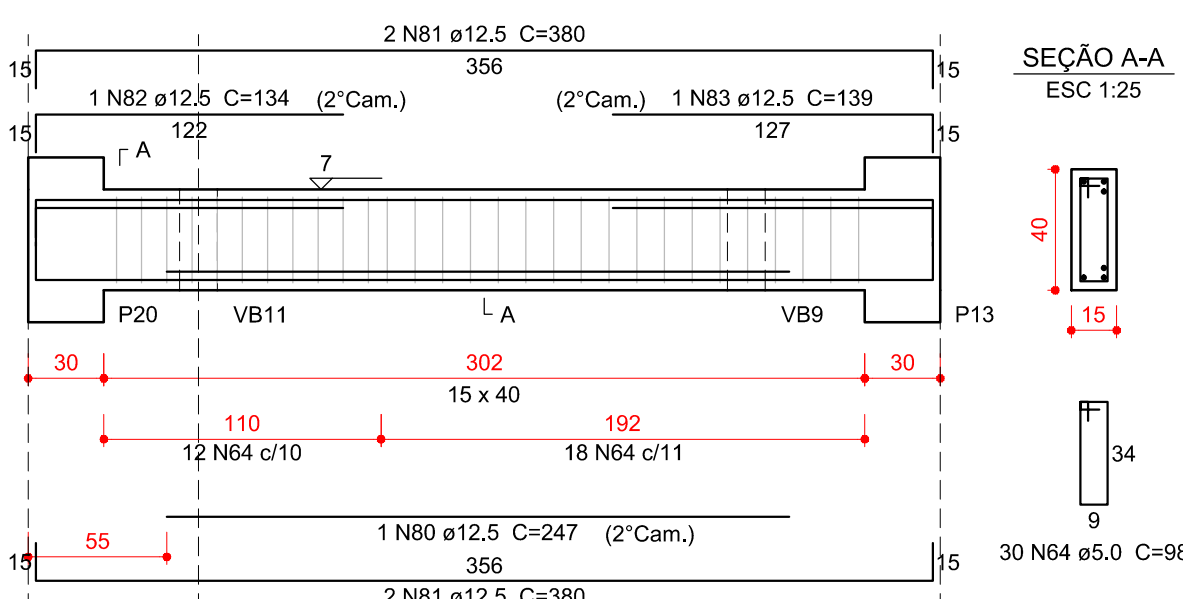
VB14
ESC 1:30



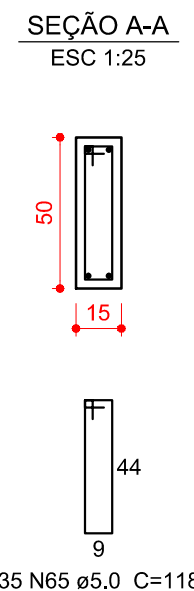
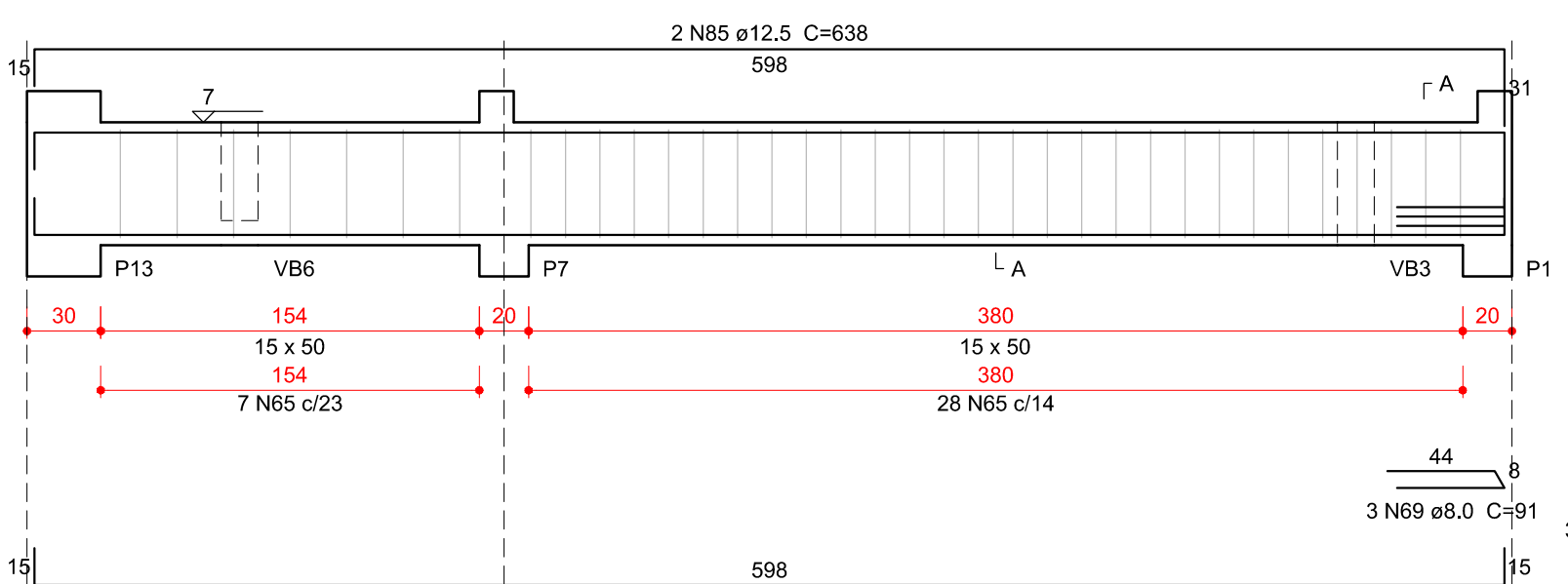
VB18
ESC 1:30



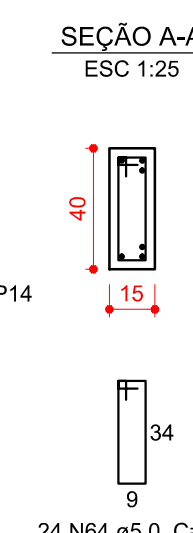
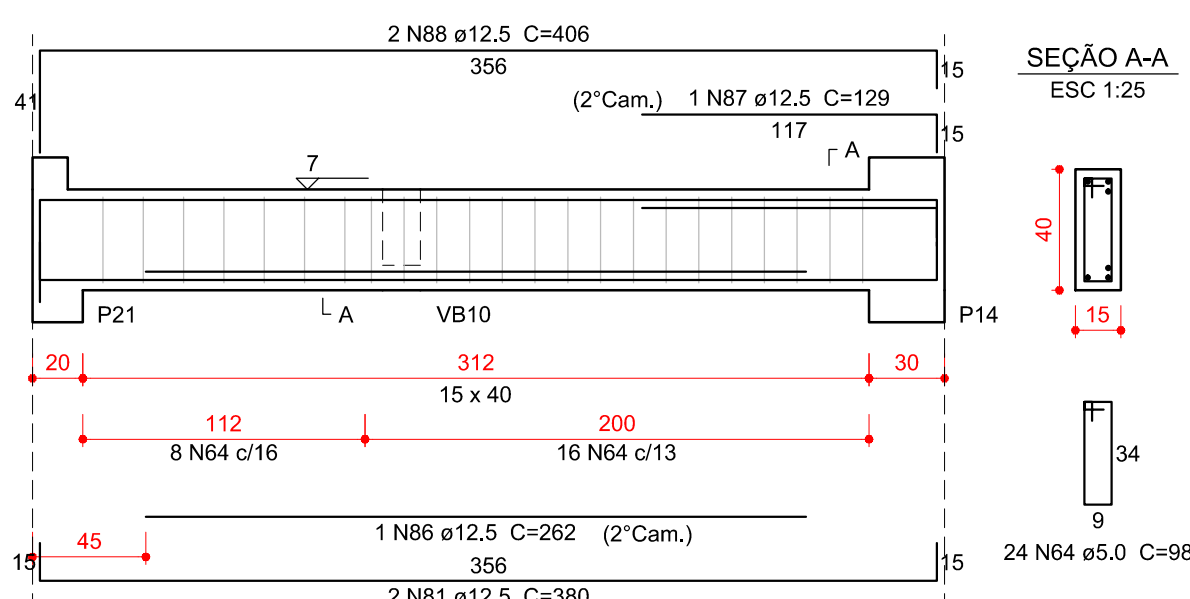
VB19
ESC 1:30



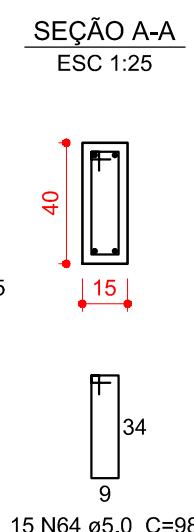
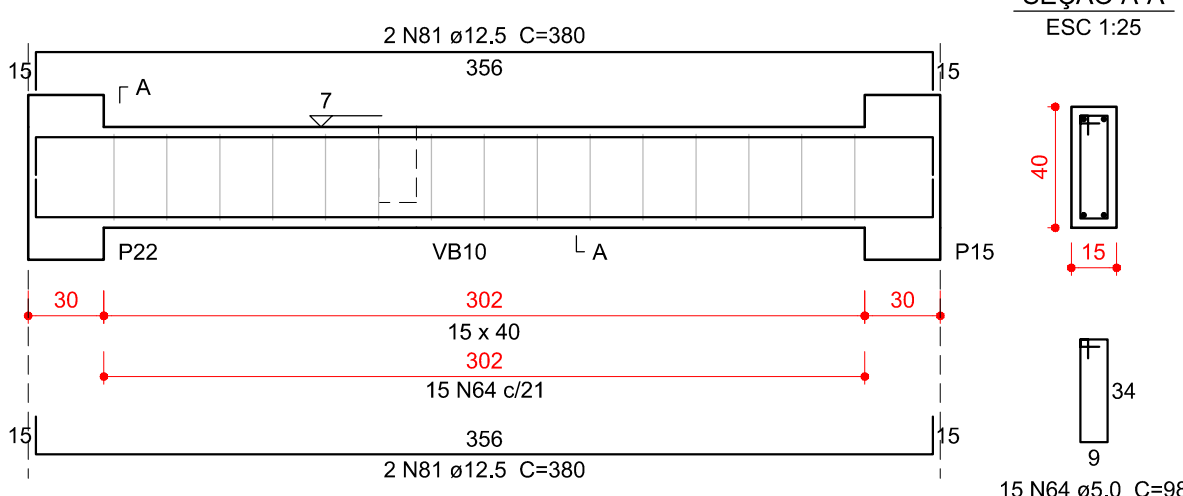
VB20
ESC 1:30



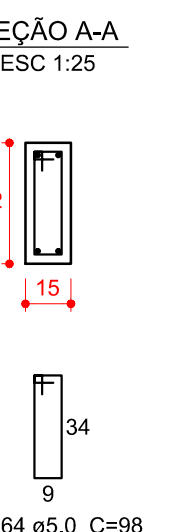
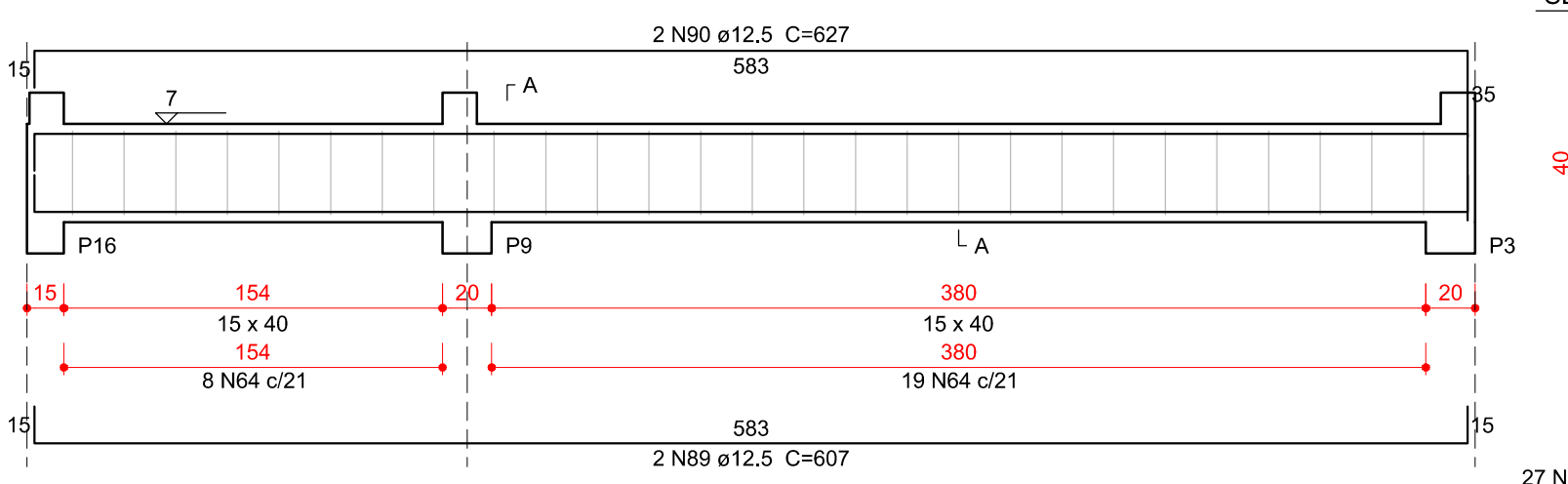
VB21
ESC 1:30



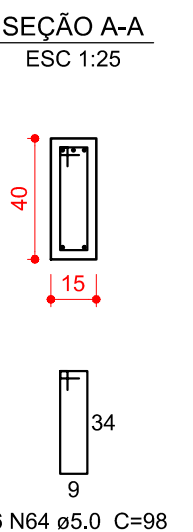
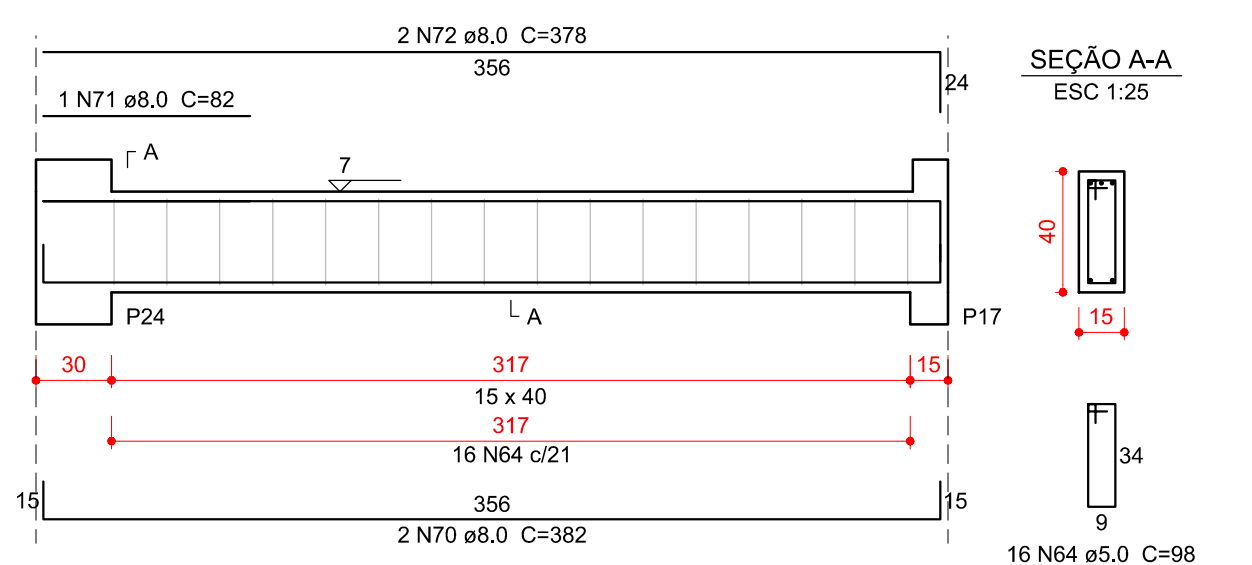
VB22
ESC 1:30



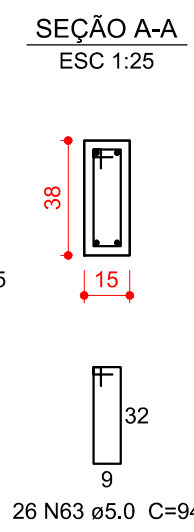
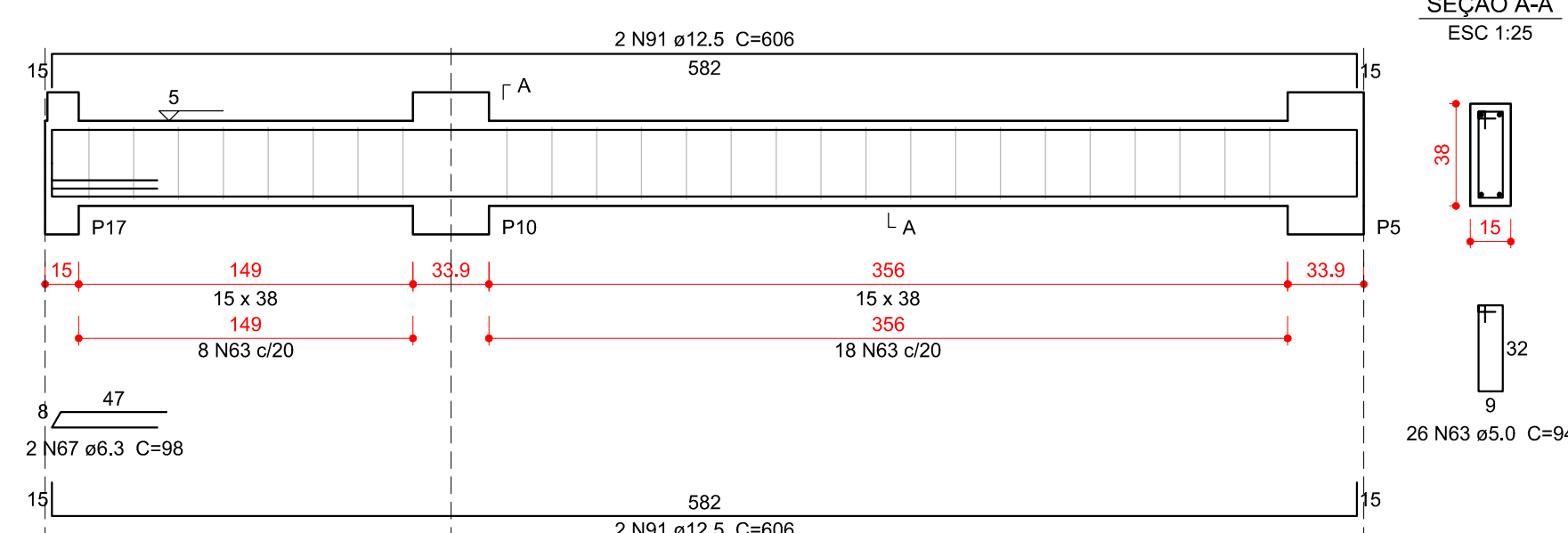
VB23
ESC 1:30



VB24
ESC 1:30



VB25
ESC 1:30



Relação do aço

ACO	N	DIAM (mm)	QUANT	C.UNIT (cm)	C.TOTAL (cm)
CA60	63	5.0	39	94	3666
	64	5.0	165	98	16170
	65	5.0	35	118	4130
	66	6.3	1	70	70
	67	6.3	2	98	196
	68	8.0	2	389	778
	69	8.0	3	91	273
	70	8.0	2	382	764
	71	8.0	1	82	82
	72	8.0	2	378	756
CA50	73	10.0	2	934	1868
	74	10.0	2	670	1340
	75	12.5	1	296	296
	76	12.5	2	444	888
	77	12.5	1	170	170
	78	12.5	1	164	164
	79	12.5	2	470	940
	80	12.5	1	247	247
	81	12.5	10	380	3800
	82	12.5	1	134	134
	83	12.5	1	139	139
	84	12.5	2	622	1244
	85	12.5	2	638	1276
	86	12.5	1	262	262
	87	12.5	1	129	129
	88	12.5	2	406	812
	89	12.5	2	607	1214
	90	12.5	2	627	1254
	91	12.5	4	606	2424


Resumo do aço

ACO	DIAM (mm)	C.TOTAL (m)	QUANT + 10 % (Barras)	PESO + 10 % (kg)
CA50	6.3	2.7	1	0.7
	8.0	26.6	3	11.5
	10.0	32.1	3	21.8
	12.5	154	15	163.1
CA60	5.0	239.7	22	40.6
PESO TOTAL (kg)				
CA50		197.1		
CA60		40.6		


Volume de concreto (C-30) = 2.81 m³
Área de forma = 44.27 m²

02	21/03/2017	Compatibilização BIM	Rafael
01	02/03/2016	Revisão NBR6118:2014	Rafael
N	DATA	ASSUNTO DA REVISÃO	RESPONSÁVEL

REVISÕES



GOVERNO DO ESTADO DE SANTA CATARINA
SST - SECRETARIA DE ESTADO DA ASSISTENCIA SOCIAL, TRABALHO E HABITAÇÃO



<p>PROPRIETÁRIO: Secretaria de Estado da Assist. Social, Trab. e Habitação</p> <p>OBRA: CRAS - Centro de Referência da Assist. Social</p> <p>LOCAL: Conforme edital</p> <p>ARQ. ELSA CRISTINA DE ABREU KONESKI CAU: 17.047-0/SC</p> <p>ARQ. BARBARA MARTINS GODENY CAU: A49787-8</p> <p>ENG. CIVIL RAFAEL F. TEIXEIRA DA SILVA CREA-SC: 052547-8</p>	<p>MUNICÍPIO: Conforme edital</p> <p>ESCRITÓRIO REGIONAL: SPG - Secretaria de Estado do Planejamento</p> <p>TIPO: Edificação pública em 1 pav. em alvenaria e concreto armado</p> <p>PROJETO: ESTRUTURAL REFERÊNCIA: BALDRAME - VIGAS</p> <p>DESENHO: ARQ. RICARDO DE FREITAS CAU: 31.474-6/SC</p> <p>DATA: 23/03/2017</p> <p>ESCALA DO DESENHO: INDICADA</p> <p>ARQUIVO: EST_Baldrame_Amadora_Vigas_02_002.DWG</p>
--	---



ARTHUR STOFFELA
BRUNA CAMPOS
GABRIELA DE RÊM GOETH
KAROLINE ANTUNES
YASMIN HERDEN

EST
5
15